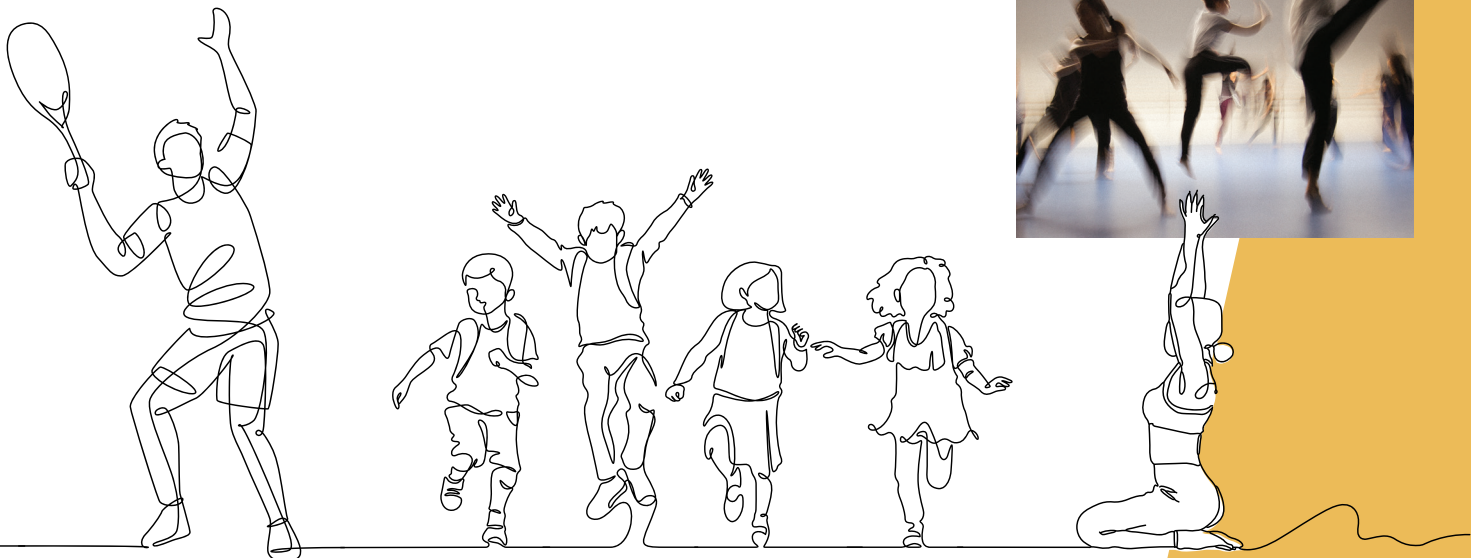


A Place for Us.

CURRENTS CENTER FOR RECREATION AND CREATIVITY

A public, year-round, indoor space where the community can gather and engage in shared experiences, invest in physical, social and emotional health, and develop social networks that reinforce a sense of community.

An expansion of the Currents Aquatic Center will enhance community engagement, recreation and the arts.



Safe

All Ages

Inclusive

Community-Centered

Imagine a Place for You.

RECREATION

CREATIVITY

CONNECTION



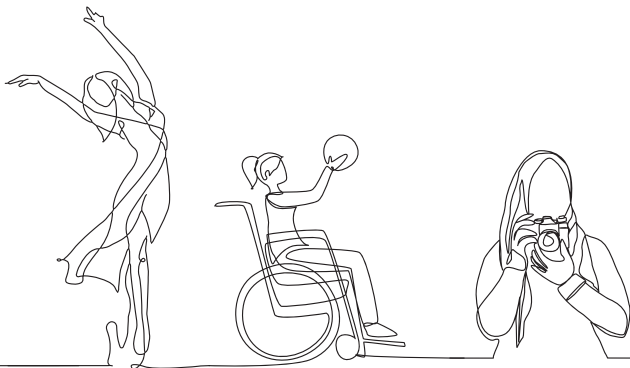
Imagine a place overflowing with talk and laughter.

- A gym for engaging in games like pickleball, basketball, futsal, and volleyball
- A ballroom for community dances and celebrations
- Studios for movement, dance, wellness classes, and rehearsals
- Performance space for local dance, theater, music, festivals, lectures...
- Free-play, drop-in spaces for children, hang-out spaces for teens, and social spaces for aging adults
- Zero-depth entry deck for water play and a pool for aquacise or swimming lessons
- A quiet corner for relaxing and having a cup of coffee, knowing others are safely and actively engaged elsewhere in the CCRC



Imagine a transformative place where...

- People of all backgrounds can expand their social circle and discover new interests
- Engaging activities are accessible to all ages, abilities, and income levels
- The indoor spaces allow everyone to stay active and connected during dark, icy winters, and hot, smoky summers
- Embracing diversity helps Missoula's vibrant, growing community become ever stronger and more interconnected



Make the Vision a Reality!

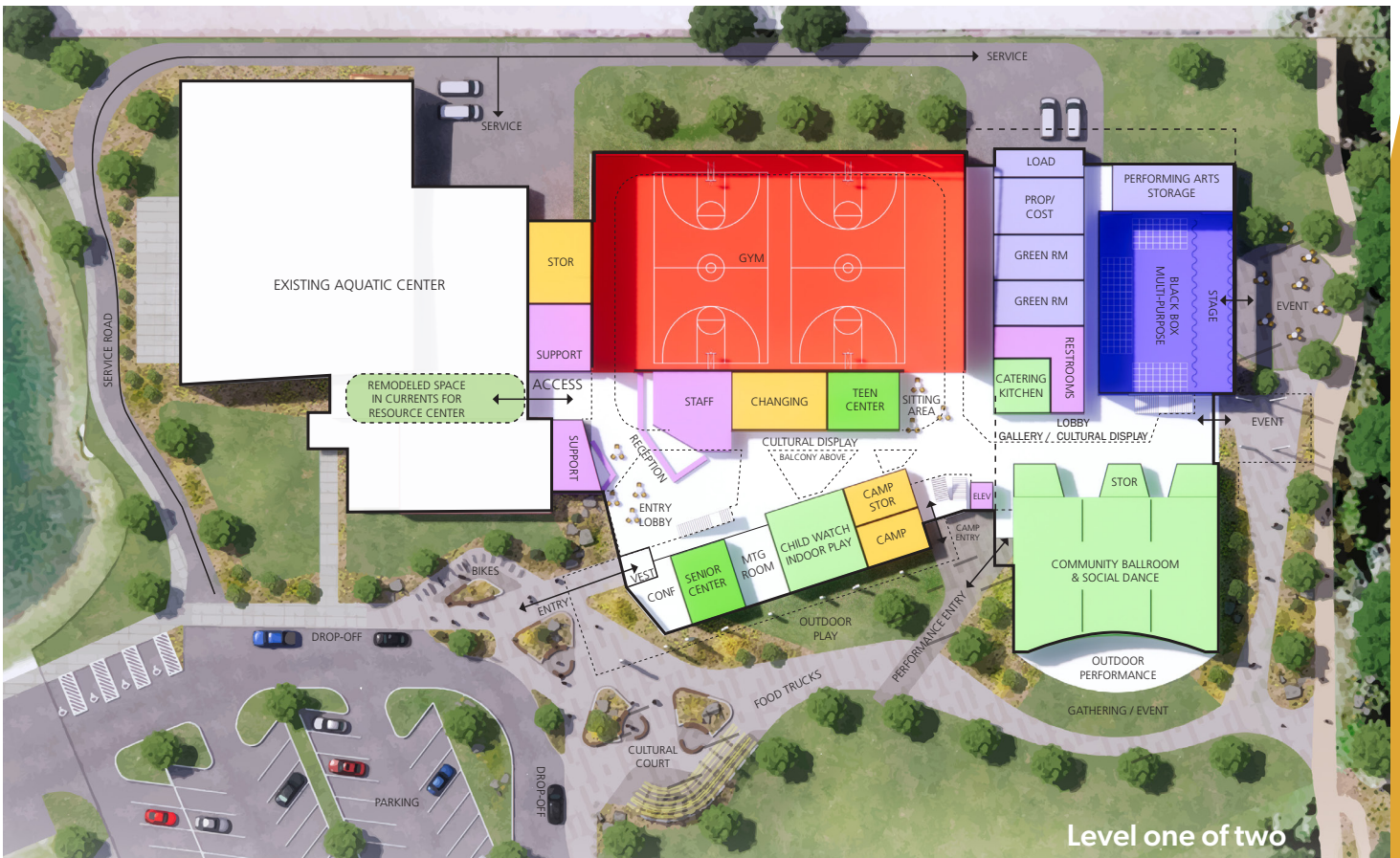
LEARN MORE, GET INVOLVED, DONATE

Indoor

Affordable

Year-Round

Accessible



Every
Person.

Healthy.

Hopeful.

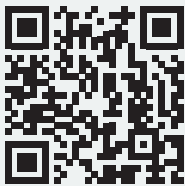
Connected.

One
Community.

The Currents Center for Recreation and Creativity (CCRC) and its programs will be made possible by a public-private partnership among members of the community, the City of Missoula, and The Converge Foundation.

The Converge Foundation is a 501(c)3 nonprofit organization providing private, philanthropic support for the city-owned CCRC facility. Once the city of Missoula commits funding for the construction of the CCRC, The Converge Foundation philanthropy will focus on:

- Expanding CCRC programs and offerings.
- Maximizing the potential of CCRC's physical spaces.
- Ensuring the recreational, creative and social activities of the CCRC are accessible to and affordable for everyone.



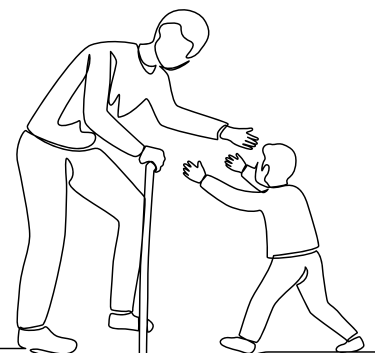
LEARN MORE, GET INVOLVED, DONATE

convergefoundation.org



info@convergefoundation.org

Mailing Address:
400 W. Broadway, Suite 101-214
Missoula, MT 59802



Indoor

Affordable

Year-Round

Accessible