

# The Converge Foundation



## 2022 Impact Report

*July 1, 2021 through June 30, 2022*

---

The Converge Foundation is a 501(c)(3) nonprofit organization based in Missoula, Montana and serving the community of Missoula.

Contact: [tcf@convergefoundation.org](mailto:tcf@convergefoundation.org)

Website: <https://convergefoundation.org>

© 2022 by The Converge Foundation

# In Gratitude



## The Converge Foundation (TCF)

TCF was founded in August 2021 to support programming at the future Currents Center for Recreation and Creativity (CCRC). An outgrowth of a citizens working group that formed in 2001, we are grateful for the support received to establish TCF and bring the concept of the CCRC to fruition. While it is always challenging to launch a new organization, the generosity of Missoulians willing to support a community vision made us believe the possible. That generosity - exhibited as financial support, conversations, ideas, and enthusiasm for a “Currents Center for Recreation and Creativity” – has allowed us to keep moving forward. We look forward to having our supporters continue this journey with us and unlock the potential of the Missoula community to fully realize our collective vision for a healthy, hopeful and connected community.

## Building a Foundation

In our first year, TCF faced the challenge of sailing our ship while building it. We stayed engaged with the Missoula community while we formed this new organization. We accepted the responsibility to “right the ship” and worked to ensure The Converge Foundation had the organizational underpinnings to stay true to its vision, mission, and values.

Setting the proper culture to support organizational growth and sustainability is a key focus. We hired a professional advisor, familiar with the Missoula community, who provides weekly organizational development and fundraising counsel.

- The Converge Foundation raised **92%** of its planned two-year operational budget through private donations from **15 donors**. Our first year of operation was fully funded, and our second year is well underway. We are sincerely grateful to the early-adopter donors who believed in our organization and its vision.
- The board of The Converge Foundation provided over **2,025 hours** of volunteer service, along with additional resources, to engage with the Missoula community and advance our vision.
- The Converge Foundation is a recognized 501(c)(3) public foundation. Friends of Missoula Parks served as our fiscal sponsor to process donations on our behalf until full tax-exempt status was achieved.

## The Converge Foundation's aspirations:

**Our Vision** - Every person healthy, hopeful, and connected. One community.

**Our Mission** - Maximize opportunities that foster curiosity and healthy, creative activities for all in a safe and welcoming environment.





## The Converge Foundation's values:

- **We are RESPECTFUL** – We respect one another and those with whom we engage.
- **We value INCLUSIVITY** – We will work to encourage participation by all members of our community and to create a safe and welcoming environment.
- **We embrace INTEGRITY** – We hold ourselves and those with whom we work and whom we serve to the highest standards in honesty and character.
- **We are DEPENDABLE** – We will put forth our best individual efforts so that we can count on one another and those we serve can count on us.
- **We are GRATEFUL** – We express our appreciation to one another and all persons who support our vision and mission.
- **We embrace COMMUNITY** – We will work to maintain and strengthen Missoula's powerful sense of community.

## The Converge Foundation Strategic Goals – FY2022-FY2025

**Initiative #1: MARKETING AND BRAND AWARENESS** - Develop marketing, education, and outreach programs to inform the community about the impact of The Converge Foundation and the Currents Center for Recreation and Creativity.

**Initiative #2: PARTNERSHIPS** - Foster and define partnerships with governmental and non-governmental organizations and individuals to support the mission of The Converge Foundation and programming within the Currents Center for Recreation and Creativity.

**Initiative #3: OPERATIONS** - Determine The Converge Foundation's operational needs in collaboration with external partners to ensure long-term success.

**Initiative #4: GOVERNANCE** - Be proactive about developing a diverse and representative board that can advance The Converge Foundation's vision.

**Initiative #5: FUNDRAISING AND THE CAMPAIGN** - Continue to build donor relationships and pursue additional sources of funding to sustain The Converge Foundation's mission.

## The Currents Center for Recreation and Creativity (CCRC)

The CCRC is a public investment in the physical, social and emotional health of all Missoulians. To ensure access for all Missoulians, The Converge Foundation will act as the private philanthropic arm of the city-owned and operated CCRC.

Our foundational work continues. TCF was central to the 2021 city-run public process that generated the architects' conceptual design for the CCRC. Additionally, we have conducted numerous conversations with leaders in city government and of social service, arts and sports organizations and possible donors to raise awareness about the potential of the CCRC to be a transformative community space.

We will continue to foster conversations one-on-one, at public events and in hands-on listening sessions to keep this public/private project moving forward until the facility becomes a reality. Then we turn to our real work – that of securing funding to ensure that Missoulians can offer programming at the CCRC and participate in the Center's activities.







## The Currents Center for Recreation and Creativity (CCRC)

The architect's concept plan for the CCRC was adopted on May 23, 2022 by the Missoula City Council. This sets the stage for further advancing the community dialogue on funding and programming.

The images on the following pages represent the physical design that encapsulates both the programming ideas and guiding principles derived from an 8-month public process directed by the City of Missoula in 2021.

The concept design considered all spaces to be accessible, multiple-use, adaptable to future uses, and acoustically appropriate. The CCRC identified spaces for several specialized uses:

- Teens
- Older adults
- Child-watch
- Run/walk track
- Resource Center
- Storage areas
- Studios for music, dance, wellness, etc.
- Changing areas
- Green rooms
- Catering kitchen
- Reception area
- Snack bar
- Early-learning
- ... and more

# Guiding Principles

## DIVERSITY AND ACCESSIBILITY

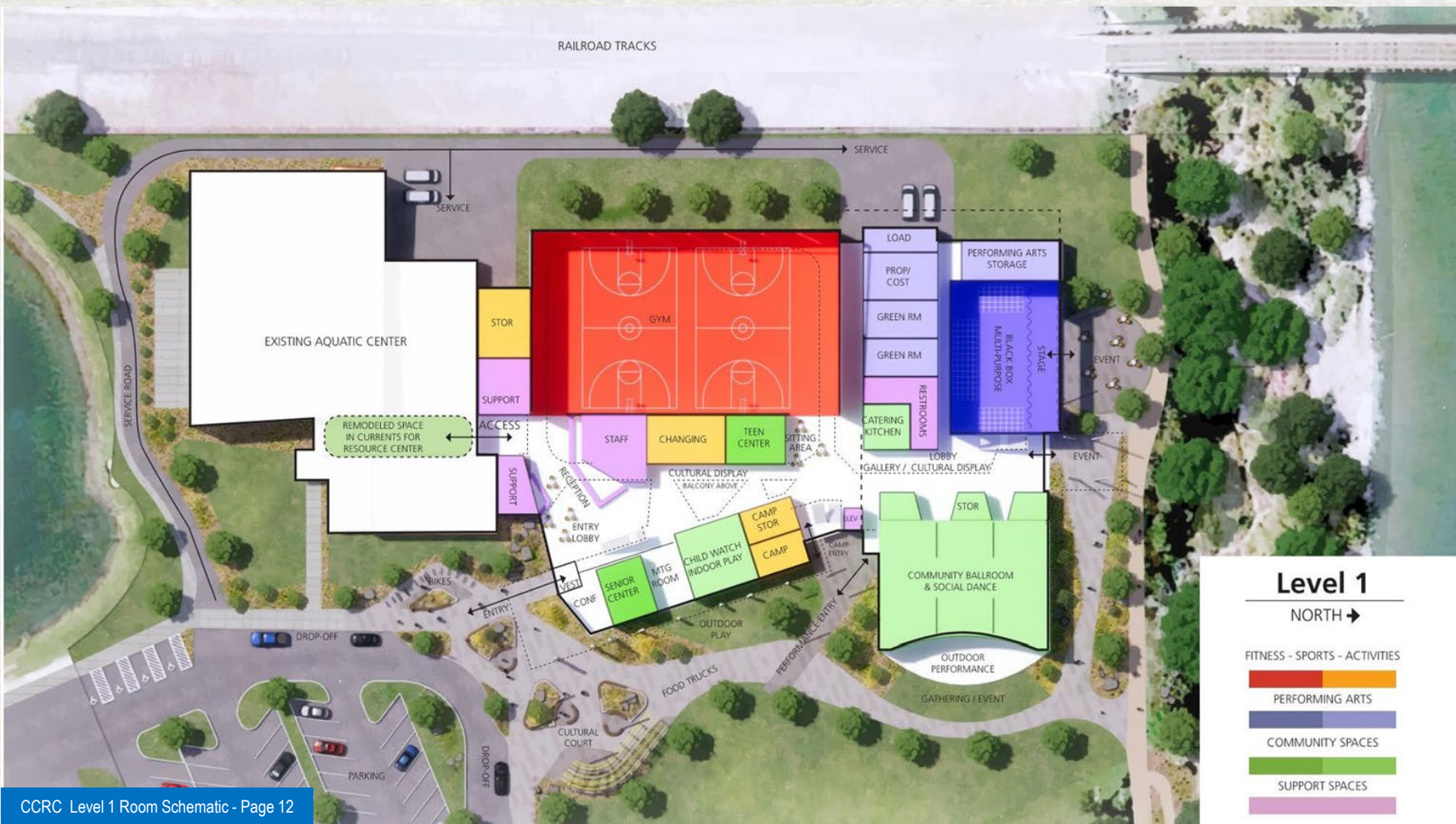
- **Respect and integrate with existing community services and amenities.**
- Missoula is a diverse community, and the Community Center should **reflect** that **diversity**.
- Welcoming to **all** generations, ethnicities, cultures, races, genders, and sexual identities.
- **Accessible** to people of all abilities.
- Fixed structures that restrict use or **accessibility** of space diminish opportunities for **multiple uses**.
- **Affordable** to all in terms of building the Center, maintaining the Center, and using the Center.

## ACCESSIBLE, SUSTAINABLE DESIGN

- **Respect the planet and model climate change awareness and sustainability.**
- Users and visitors will **experience intentional design** related to the arts, culture, creativity, recreation, and social gathering.
- **Aesthetic** combines **organic** materials, acoustic sensitivity, and **efficient** use of space that is **welcoming**.
- **Modest rather than opulent.** Missoula is a working community, and the Center should create a welcome feeling.
- **Enduring rather than trendy.** The design needs to be **adaptable** – something that can be reworked over the coming decades.



RAILROAD TRACKS



# Level 1

NORTH →

FITNESS - SPORTS - ACTIVITIES



PERFORMING ARTS

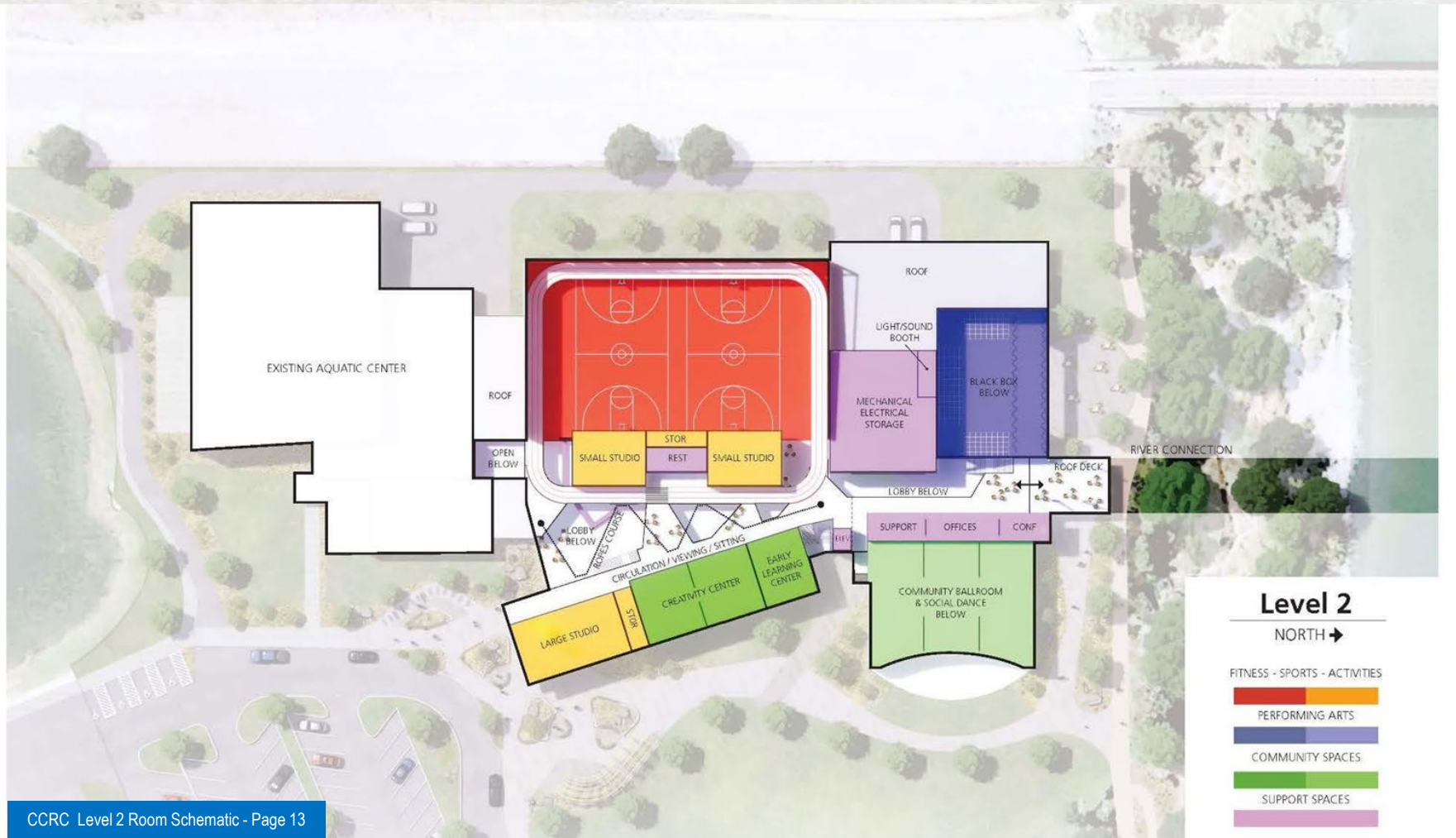


COMMUNITY SPACES



SUPPORT SPACES





CIRCULATION LOBBY

LARGE STUDIO

CULTURAL COURT



MAIN ENTRY

DROP-OFF



ELEVATED TRACK

GYM

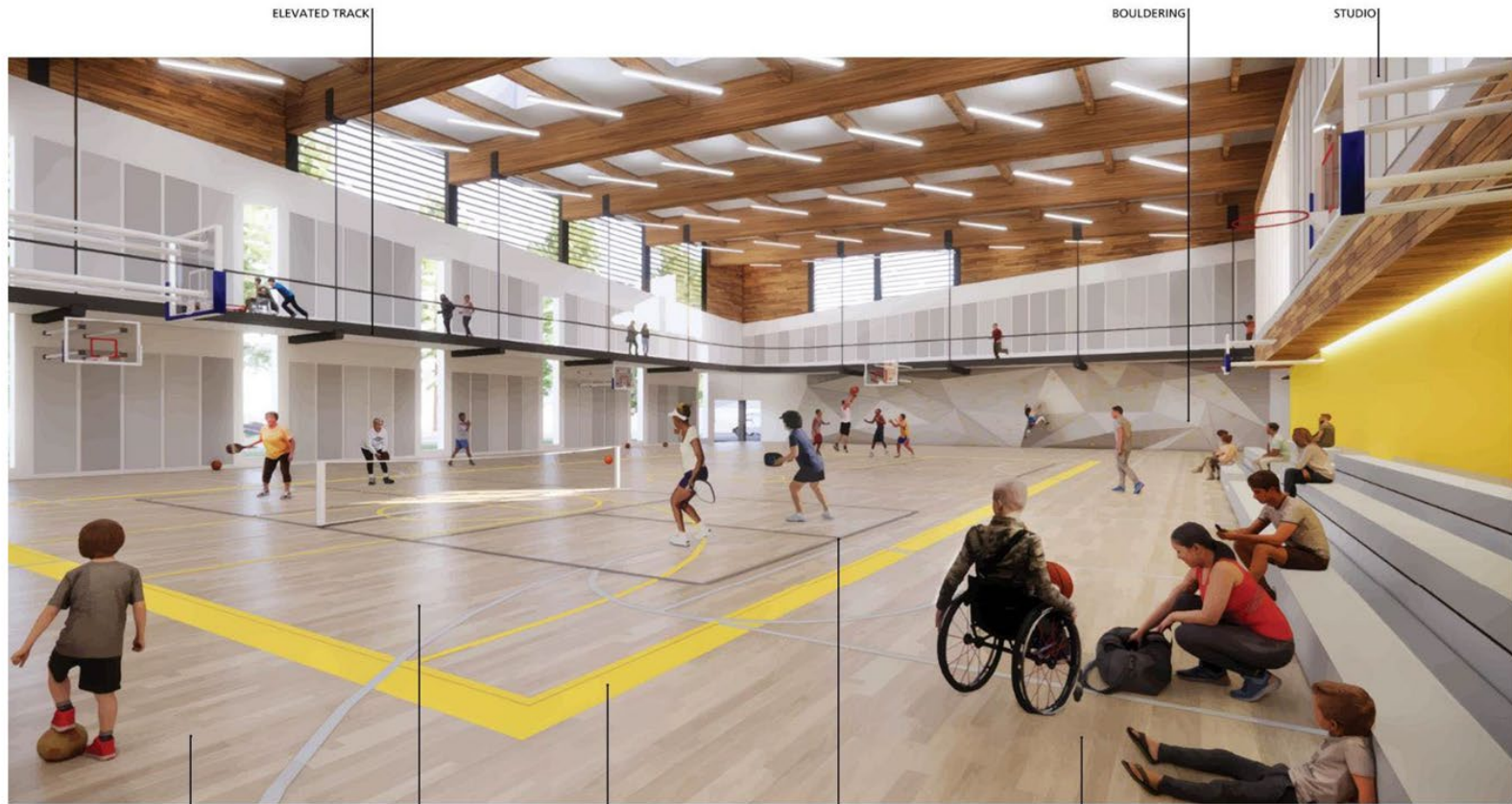
STAFF / RECEPTION

CULTURAL DISPLAY

CHANGING

TEEN CENTER

SENIOR CENTER



ELEVATED TRACK

BOULDERING

STUDIO

FUTSAL

4 VOLLEYBALL COURTS

2 BASKETBALL COURTS

9 PICKLEBALL COURTS

ADAPTIVE SPORTS



Community room is designed to be divided using sound-proof drop-down dividers.



IMAGE PAID FOR IN PART BY THE CONVERGE FOUNDATION

Multiform theater is designed for 250 retractable seats that telescope out from the walls. North wall opens to outdoors.



IMAGE PAID FOR IN PART BY THE CONVERGE FOUNDATION

COMMUNITY BALLROOM & SOCIAL DANCE

SOLAR PANELS

BLACKBOX THEATER

EVENT BALCONY  
RIVER VIEWS



INTERIOR / EXTERIOR PERFORMANCE,  
SOCIAL GATHERING & EVENT

RIVER WALK

OUTDOOR THEATER PATIO / EVENT





## The Converge Foundation 2022 Officers

- Michael Sweet, Director/Chair
- Amy Ragsdale, Director/Treasurer
- Tarn Ream, Director/Secretary

Contact us via [tcf@convergefoundation.org](mailto:tcf@convergefoundation.org)

## Resources

- *The City of Missoula's "Engage Missoula" site for city projects*  
(<https://www.engagemissoula.com/currents-community-center>)
- *The Converge Foundation* (<https://convergefoundation.org>)
- *What makes a successful place?*  
(<https://www.pps.org/article/grplacefeat>)